

Achievement, Creative & Performing Arts

member, and value.

- All entries are due at State Session on Thursday between 8 a.m. to noon.
- Individuals may have more than one entry in a class.
- All categories are open to Grange members in good standing as well as non-members sponsored by a local Grange.
- Entries must be completed since the beginning of the previous State Convention.
- We reserve the right to combine or divide classes as number of entries warrants.
- Participants must select the class for his/her entry.

Awards: First place receives \$5, second place \$3 and third place \$2.

A **Best of Show** will be awarded.

1. The **Grange** with the most entries will receive **The Colorado State Grange Lecturer's Participation Award**.
2. A **Sweepstakes Award** will be given to the **individual with the most entries in the Lecturer's programs**.

Fine Art

Guidelines:

- All entries must be framed or on a firm backing which enables the entry to be properly displayed.
- Entrant is responsible if charcoal and pencil entries are not treated to prevent smudging.
- Entries of nudes are not allowed.
- Entries cannot be covered with glass. (Plexiglas may be used.)

Criteria for judging entries:

- Use of medium selected — Craftsmanship and skill — Composition/presentation of subject — Originality

- Classes:**
1. Painting
 2. Drawing
 3. Computer art/collage

Hobby Corner

Guidelines:

- All work must be original from start to finish, with the exception of a purchased frame, kit, or mold.

Judging Criteria:

- Originality/Neatness/Creativity/Workmanship

- Classes:**
1. Holiday items
 2. Jewelry
 3. Miscellaneous
 4. Individual Scrapbooks
 5. Special Gifts

Work Bench

Guidelines:

- All work must be original from start to finish, with the exception of a purchased frame, kit, or mold.

Judging Criteria:

- Originality/Neatness/Creativity/Workmanship

- Classes:**
1. Woodworking
 2. Handmade Toys
 3. Leather Craft
 4. Metal Craft
 5. Duct Tape Craft

Photography

Guidelines:

- Photos should be mounted or in a photo mat.
- **Framed photos will not be accepted.**
- An image may be entered in only one class.
- Participants may enter all classes using separate images.
- Participants may have multiple entries in one category.
- Photos/images may be made by a commercial processor, but

must have been taken by the entrant.

- The photo must not be less than 4 x 6 or larger than 11 x 14.
- A caption/title about the photo is optional.
- Only prints (color, black/white or digital) will be accepted, no slides.
- Professional photographers may not enter the contest (professionals make their living through photography).

Judging Criteria:

- Composition and arrangement — Interest — Presentation — Technique

- Classes:**
1. Landscapes and Seascapes
 2. People
 3. Animals and Other Creatures
 4. Photo Collage or Story

With Pen in Hand

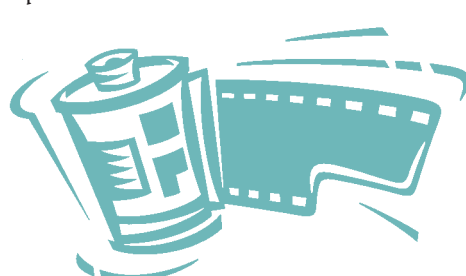
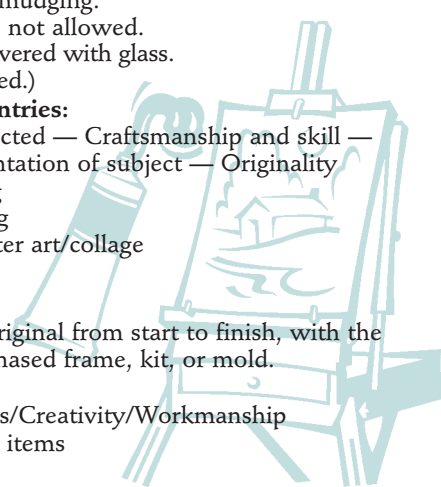
Guidelines:

- All entries must be typed and double spaced.
- Entries may be fictional or non-fictional.
- Flyers and Pamphlets may be computer generated.

Judging Criteria:

- Content — organization
- Spelling, punctuation and grammar
- Audience appeal

- Classes:**
1. Short story or essay
 2. Recommend a book. (your choice)
 3. Poetry
 4. Pamphlet/Flyer



Membership Program

Dominick Breton, Director

3645 Marshall St., Wheat Ridge, CO 80033

Phone: 303-919-2680

Email: dom.e.breton@gmail.com

The Colorado State Grange membership program will offer recognition and rewards to Granges for new members joining September 1, 2018-August 31, 2019. The

Subordinate/Community Grange with the most net members will be recognized, as well as the top recruiters. A form will be sent to report your membership to us. Please fill it out completely and return it to me by mail, email or give it to us on the first day of State Session. If you mail it be sure to send as early as you can in September so that it will arrive at my home before the week of State Session.

To summarize, you may be recognized in three ways:

- 1) Granges that get at least seven (7) new members.
- 2) The Subordinate/Community Grange with the most new members.
- 3) The Top Recruiters in the State will be honored.

Remember, ask someone to join your Grange. YOU can make a difference. New members make your Grange stronger.

